

SEARCH By

HOME

LATEST NEWS

SECTOR NEWS

MAGAZINE

VIDEO REPORTS

RESEARCH

PRESS OFFICE

ANNOUNCEMENTS

LOGIN

Columnists

What's On

fdt AFRICA

Jobs

Topics

Tenders

Apps

Supplier's Directory

About Us

Legal Notice

Comment Guidelines

Letters

Marketing Videos



R/€ = 16.75
Au 1232.91 \$/oz

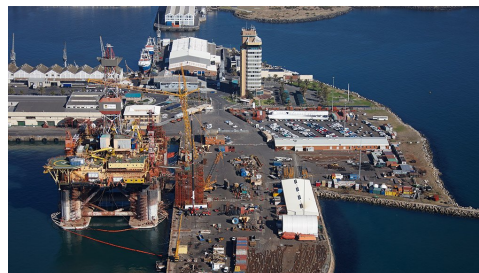
R/\$ = 14.45
Pt 849.00 \$/oz

Follow @EngNewsZA

Home / Sector News / Transport & Logistics / **Transport & Logistics Home**

← Back

New partnership expected to enhance maritime group's service offering



ENHANCED SERVICE The integration of 6Sigma into DCD Marine as in-house engineers has resulted in significantly improved process efficiency

5TH FEBRUARY 2016

[SAVE THIS ARTICLE](#)
[EMAIL THIS ARTICLE](#)

BY: **MIA BREYTENBACH**
CREAMER MEDIA DEPUTY
EDITOR: FEATURES

FONT SIZE:

Turnkey ship repair solutions provider DCD Marine Cape Town has enhanced its engineering capacity through a strategic partnership with engineering firm 6Sigma Naval Architects and OffShore Engineering.

6Sigma, established in 2012, provides specialist engineering ipbuilding and repair yards.

Subscribe Now for R1050

Subscribe



Read Now

Advertise Now





house engineers has resulted in significantly improved process efficiency that includes improved communications, leading to a reduction in timelines, costs and client risk.

Maritime clients will also enjoy the enhanced service of having access to a dedicated engineer-ing office and 24/7 full engineering support with-out being subject to any contractor-subcontractor limitations.

“While 6Sigma is enjoying a growing portfolio, DCD Marine Cape Town is able to leverage off the company’s scarce skills set and also has more influence in the design process,” adds 6Sigma director **Jako Laubscher**.

The company offers design services for steel and aluminium boats, ships and offshore structures, as well as finite element analysis (FEA), stability analysis, propulsion estimations, vessel modification – all elements of overall design, including concept and basic and detail design.

“6Sigma focuses on identifying and eliminating potential engineering errors, being closer to the ‘shop floor’ and, therefore, offers a better engineering solution and service,” he points out.


The company has been subcontracted by DCD Marine Cape Town over the past few years on various projects, and provided services in FEA analysis, offshore containers, vessel modifications, systems engineering, updating class drawings, design, fabrication, project management, surveying and class approval.

Laubscher emphasises that a key focus is now on further research and development to enable 6Sigma to provide up-to-date in-house knowledge in terms of regulatory changes and the most cost-effective engineering solutions.

“While meeting this gap in the market, 6Sigma also leverages the knowledge and experience of its software partners to ensure that it remains competitive internationally,” he adds.

“This industry is one of the most regulated and complex in the world and there are no shortcuts. It requires a high-level skills set and a dedication to the delivery of top-quality work,” Truter says.

He therefore highlights that the collaboration will strengthen DCD Marine’s position as a world-class service provider in the oil, gas and ship-repair sector.

DCD Marine Cape Town, which specialises in engineering solutions for the upstream oil and gas sector, as well as ship repair projects, is based in the ports of Cape Town, Durban and Port Elizabeth and can service the deep-water Port of Ngqura and Saldanha Bay harbour. 

EDITED BY: MARTIN ZHUWAKINYU
 CREAMER MEDIA SENIOR DEPUTY EDITOR

[EMAIL THIS ARTICLE](#) [SAVE THIS ARTICLE](#)

To subscribe email subscriptions@creamermedia.co.za or [click here](#)
 To advertise email advertising@creamermedia.co.za or [click here](#)

MANUFACTURING

Capital Equipment Chemicals & Pharmaceuticals
 Clothing & Textiles Food & Beverage
 Foundries, Forges & Die-Casting Furniture & Wood products
 Hydraulics Industrial Filters & Filtration
 Instrumentation & Control Manufacturing
 Metals & Engineering
 Paper, Plastics, Pipes & Tubes

SERVICES

Architecture Business Process Outsourcing
 Consulting Engineers Corrosion Control
 Education & Skills Development Financial
 Legal
 Maintenance Material Handling
 Quality Assurance & Standards Quantity Surveyors

Subscribe Now for R1050 



[ABOUT](#)

[NEWSLETTERS](#)

[SUBSCRIPTION](#)

[ADVERTISE](#)

[Research](#)
[Channel](#)
[Africa](#)
[Polity](#)

available
 via the
 Creamer
 Media
 Store

sq, 2016-02-05 11:15 - 794pq - 2rq

prospective
 clients.
 Email

advertising@creamermedia.co.za

[Legal Notice](#)

[Comment Guidelines](#)

© Copyright 2018



Subscribe Now for R1050